

## Contact Details

**Website:** [www.cheshireaction.org.uk/our-services/pathfinder-east](http://www.cheshireaction.org.uk/our-services/pathfinder-east)

## Contact Email:

[pathfindereast@cheshireaction.org.uk](mailto:pathfindereast@cheshireaction.org.uk)

## Contact Number:

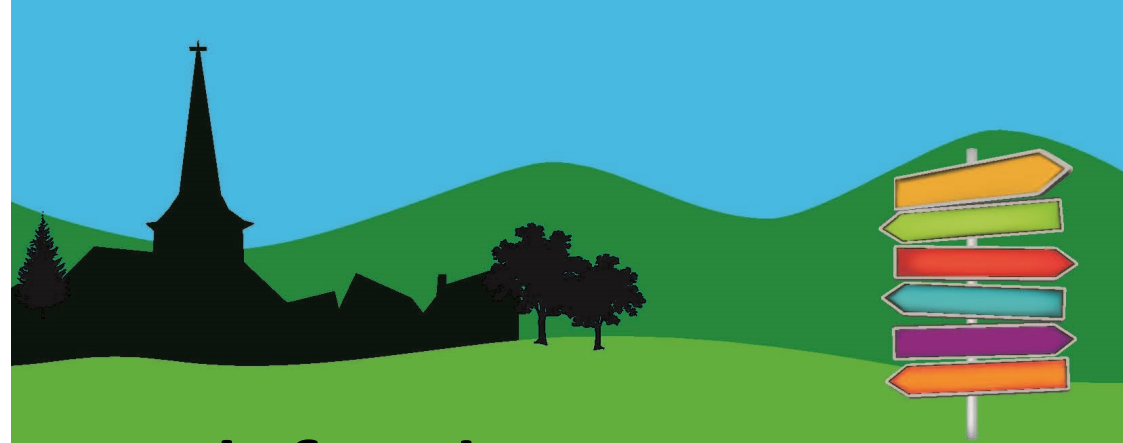
**07799 519431**

All information will be received in the strictest confidence.

[www.cheshireaction.org.uk](http://www.cheshireaction.org.uk)

This service is delivered under contract for Cheshire East Council.

**Charity number 1074676 Company number 3555199**



# Pathfinder Cheshire East

Do you feel isolated and would like to attend social activities and meet new people?

Would you benefit from free, confidential support, advice and information about local services?

Not sure who to turn to ?

Then the Pathfinder service could help you.



**The Pathfinder service is able to provide information and one-to-one support, for example:**

We can make you aware of any **leisure and social activities** which take place in your local community.

**Health, care and transport needs** such as finding and utilising health services, advice and support for carers, arranging home help and helping with transport issues.

**Housing issues** including information about home adaptations, repairs and improvements. Having smoke alarms fitted, home security issues, the need to move house and dealing with the local authority.



**Money matters** including consumer advice and how to reduce your fuel bills. Advice on tax, benefits, pensions, debts, savings and checking how new government guidelines affect you and your loved ones.

**Completing forms** or any other paperwork you may be struggling with. We can also help you learn how to use computers and gain access to the internet.

**Volunteering**

**Would you like to volunteer to help local residents or neighbours? Can you give a few hours per week to help older people in your village or rural community? Activities will focus on linking older people with the services they need, you will be supported and trained by Cheshire Community Action.**